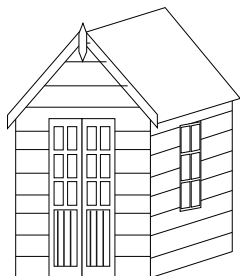


SUMMER HOUSES



THE TOPAZ

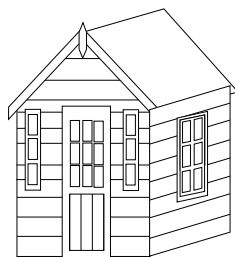
LOWEST EVE 2M HIGHEST EVE 2.3M

PREMIER RANGE

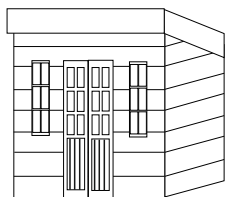
FRAME SIZE WALLS 70mm X 35mm

FRAME SIZE ROOF 70mm X 35mm

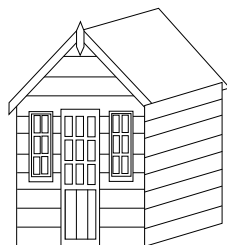
CLADDING SIZE shiplap ex 19 x 125MM
finished @ 15mm thick



THE ONYX



THE OPAL



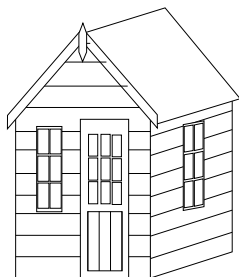
THE GARNET

ROBUST RANGE

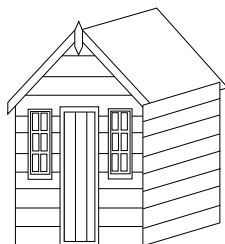
FRAME SIZE WALLS 70mm X 35mm

FRAME SIZE ROOF 70mm X 35mm

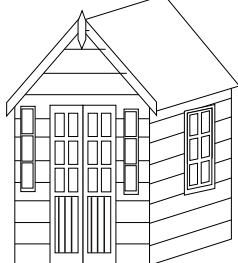
CLADDING SIZE shiplap ex 25 x 125MM
finished @ 22mm thick



THE AMBER



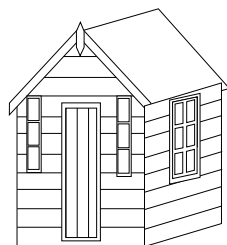
THE AMETHYST



THE JADE

ACTUAL SIZE IS METRIC (FLOOR)
(APROX. IMPERIAL SIZE)

ALL PRICES INCLUDE V.A.T.



THE PERIDOT

All cladding is now attached using stainless steel nails

STIX & STONES

SPECIALIZING IN BESPOKE GARDEN BUILDINGS

SUMMER HOUSES

STIX & STONES
MAIN ROAD
ALRESFORD
COLCHESTER
ESSEX CO7 8DD

EMAIL: info@stixandstones.co.uk
WEBSITE: stixandstones.co.uk

2021 ISSUE No 5



ALL PRICES INCLUSIVE OF V.A.T.

TEL: 01206 826835

MON - FRI 8.30am-4.00pm
SAT-8.00am-12.00 noon